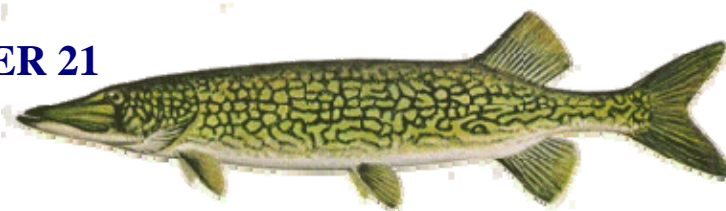


# FISHING REPORT NUMBER 21

9/13/2012



**YOU CAN FIND US DIRECTLY ON FACEBOOK.** This page features a variety of information on fishing, hunting, and wildlife watching in Connecticut. The address is [www.facebook.com/CTFishandWildlife](http://www.facebook.com/CTFishandWildlife).

## INLAND REPORT

**LARGEMOUTH BASS** fishing is reported as fair to good. Areas to try include Highland Lake, Candlewood Lake, Winchester Lake, Mill Pond Brook, Pequonnock River, Burr Pond, Halls Pond, Mansfield Hollow Reservoir, Bantam Lake, Lake Waramaug, Lake Saltonstall, Dog Pond, Lake Wononskopomuc, Mashapaug Lake (5 lb plus bass among the catches), Congamond Lakes, Bishop Swamp, Stillwater Pond, Hatch Pond, Silver Lake (Meriden) and Beseck Lake. **Tournament reports** are from Moodus Reservoir (fair fishing, only one fish over 1.5 lbs, and not by much), Amos Lake (fair to good, including a 6.7 lbunker), Highland Lake (good morning bite, then fair at best, with 3 and 3.9 lb lunkers), Lake Housatonic (not bad, nearly a 3 lb per fish average, with a 4.9 lb lunker), Gardner Lake (fair at best), Candlewood Lake (good, including four 4 lb plus bass), Rogers Lake (very good fishing, plus a 6.9 lb lunker), Bantam Lake (good, including four bass over 4 lbs each), Pachaug Pond (good, with two bass over 5 lbs each) and Powers Lake (had to really work for fish).

**SMALLMOUTH BASS** are reported at Candlewood Lake, Squantz Pond, Bantam Lake, Mashapaug Lake and Highland Lake. **Tournament reports** are from Highland Lake (not easy to find), Candlewood Lake (smallies aren't biting that well), Lake Housatonic (some action, all 1-lb smallies), Bantam Lake (fair, with a 3.75 lb lunker), and Gardner Lake (a few).

**NORTHERN PIKE** catches have been reported in Bantam Lake (including a 35 inch fish) and Winchester Lake.

**CHAIN PICKEREL** are being caught at Wononskopomuc Lake (10 fish for one angler).

**PANFISH** are providing good late summer time action throughout the state. Use worms, grubs, jigs or small poppers for them. Small local ponds are often great places, for bigger waters, places to try include Red Cedar Lake, Griggs Pond, Roseland Lake, Winchester Lake, Black Pond (Middlesex), West Twin Lake, Tyler Lake, Silver Lake (Meriden), Beseck Lake, Rogers Lake, Billings Lake, Gardner Lake, Coventry Lake, Wood Creek Pond, Quinebaug Lake, Bishop Swamp and Batterson Park Pond.

**Connecticut River** – Flows have again dropped, and are currently relatively low levels compared to typical September levels. Fishing has been slow recently. There was one report of a nice **NORTHERN PIKE** (38 inch) being caught in the lower river. **STRIPED BASS** action is very limited in the lower river. Some **LARGEMOUTH BASS** are being taken in the coves from Wethersfield to East Haddam. **SMALLMOUTH BASS** catches are reported in the Windsor/Enfield stretch. **CARP** are being caught on corn & boilies in the lower river coves.

**SHARE THE EXPERIENCE**  
Take someone fishing

Join us, September 22, 2012



Sessions Woods WMA  
10 am to 4 pm

For more information, visit:  
[www.ct.gov/deep/HuntFishDay](http://www.ct.gov/deep/HuntFishDay)

## TROUT

**Fall trout stocking update-** DEEP staff are nearing completion of the fall trout stocking schedule. Once the schedule is finalized, information concerning this year's stockings will be made available.

**Lakes & Ponds** – Some lakes are producing good fishing, with reports from Mashapaug Lake, Lake Wononskopomuc, Crystal Lake (target 22-25 feet), Beach Pond (over 30 feet of water) and West Hill Pond (30-35 feet down).

**Rivers & streams** – Conditions have begun to improve. Recent rains have brought flows in many areas (but not all) throughout the state back up to typical early September levels (see page 5) and some cool nights have really improved the water temperatures. With only limited amounts of rain in the current 10-day forecasts, anglers expect flows to drop again. Trout fishing was slow last week, with the best reports from the Farmington and Housatonic rivers (early/late). With hatches slowing now, it's a good time to switch to terrestrial fly patterns. Streamer action should get better as the fall approaches.

**Farmington River** – Flows remain clear and low, currently 74 cfs at Riverton, with the Still River adding an additional 20 cfs. Morning water temperatures are now in the low to mid 60's °F, but will rise through the day, and as you move downstream. **DEEP has rescheduled the postponed pre-Labor Day stocking and now expects to stock a total of 1,500 trout this Friday (9/14). These fish are brown trout (averaging a pound each)** and will be released into the Farmington River Trout Management Area from the Goodwin (Hogback) Dam to the old bridge abutments just below "Whittemore pool" (Barkhamsted), and from the Route 219 bridge (New Hartford) to the Route 177 bridge (Unionville).

This week (Tuesday, 9/11, through Thursday, 9/13), DEEP completed its **annual electrofishing survey** of the West Branch Farmington River. Anglers may expect fishing in some areas to be slow for a few days following sampling.

**Hatches/patterns** include *Isonychia bicolor* (major hatch, #12-14, fast water, evening), Blue Wing Olives (*Drunella* spp. & *Baetis* spp.; #18, 22-24, mid-late afternoon), Cahills/Summer (*Stenonema ithaca*, #14-16, evenings), Caddis (tan #16-18, all day; green #22-26, evening; summer pupa #18-20 morning), Midges (#22-32, morning), Black Ants (#14-20, mid day in fast water), Black Beetles (#14-18, mid day), Flying Ants (#16-30, mid day, when windy/humid, especially after rain), Stone Hopper (#8-14, mid day) and Golden Drake (*Anthopotamus distinctus*, #10-14, late evening).

### **Regulations reminder for Farmington River anglers.**

- Anglers are reminded that beginning on September 1, those portions of the Farmington River Trout Management Area upstream from the year-round catch-and-release area to the Goodwin Dam, and downstream from the year-round catch-and-release area to the Route 177 Bridge in Unionville **are catch-and-release only for trout until 6 a.m. on Opening Day, 2013.**

**Housatonic River** – Conditions continue to improve, with last weekend's rains increasing flows back up to more typical early September levels, currently 224 cfs at Falls Village and 407 cfs at Gaylordsville. Morning water temperatures are currently in the lower 60's °F (although rising through the day).

Hatches/patterns include flying ants (#14-20, mid-day, when windy/humid, September is peek month), Fall Sulfurs (#16-18), Leadwing Coachman (#10-12 evening, September is peek month), Sulfurs duns (#16-18, morning; afternoon to early evening for spinners), Cahill (#12-14, evening) and Black caddis (#14-20, early morning & evening). Golden stonefly nymphs hatch at first light and adults egg-lay after dark. Try Black Ants (#14-18, mid day in fast water), Black Beetles (#14-18, mid day), Stone Hopper (#8-10, mid day). Don't forget streamers (morning & evening), typical patterns include White, Woolly Buggers, Muddlers, Micky Finn, Grey or Black Ghosts (#4-10).

## NOTES & NOTICES:

- ❖ **WYASSUP LAKE** (impossible to launch) remains drawn down.
- ❖ **COLEBROOK RIVER LAKE** – Due to low water levels, anglers and boaters should check the USACE Colebrook River Lake website at [www.nae.usace.army.mil/recreati/crl/crlhome.htm](http://www.nae.usace.army.mil/recreati/crl/crlhome.htm) or call the Colebrook River Lake office (860-379-8234) for updated information concerning status of the boat launch.
- ❖ **LAKE MCDONOUGH**- The MDC boat launch facility has closed for the season.
- ❖ **RAINBOW RESERVOIR** is drawn down approximately 23 feet for dam maintenance, making the state boat launch unusable. Work is expected to be completed on or before September 28.
- ❖ **LAKE LILLINONAH** - A rowing/crew regatta is scheduled for Sunday, September 16, from 8 am to 1 pm. The course extends from above Lover's Leap to approximately 2.5 miles below Lover's Leap. Navigation in this area may be difficult.
- ❖ **CANDLEWOOD LAKE** - The lake level is down close to the minimum "summer" level (as required under the FERC license) to facilitate some necessary maintenance of the power facility including replacement of the penstock. At this level ('summer" minimum) the launching of trailered boats (especially larger boats) may become difficult at the Lattins Cove state launch but the Squantz Cove state launch remains fully functional.
- ❖ **LOWER BOLTON LAKE** –A canoe/kayak race event is scheduled for Wednesday, September 19 ("rain date" 9/20) from 5 pm through 8 pm. Boaters should use extra caution during the event (note that much of the course laps the lake along the shoreline).
- ❖ **LAKE ZOAR** – A water ski clinic for the disabled is scheduled for Saturday, September 15, in the upper end of Lake Zoar. This event run from 9 am to 4 pm, and boaters are asked to take care when passing through this area (marked by buoys) of the lake, and avoid interfering with the event.

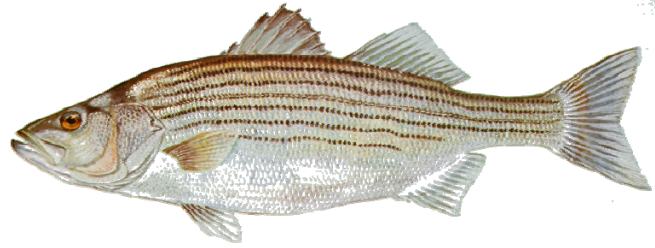
## REMINDER TO ANGLERS –



### TIME TO GET READY FOR FALL FISHING – DON'T FORGET:

- Maps of all of the state's trout streams and rivers showing the many stocking and access points are now available online at [www.ct.gov/deep/troutstockingmaps](http://www.ct.gov/deep/troutstockingmaps).
- Bathymetry maps of many lakes and ponds are now available online at [www.ct.gov/dep/lib/dep/fishing/general\\_information/lakebathymetrymaps.pdf](http://www.ct.gov/dep/lib/dep/fishing/general_information/lakebathymetrymaps.pdf)

The Connecticut Department of Energy & Environmental Protection is an Affirmative Action/Equal Opportunity Employer that is committed to requirements of the Americans with Disabilities Act. Any person with a disability who may need information in an alternative format may contact the agency's ADA Coordinator at 860-424-3194, or at [deep.hrmed@ct.gov](mailto:deep.hrmed@ct.gov). Any person with limited proficiency in English, who may need information in another language, may contact the agency's Title VI Coordinator at 860-424-3035, or at [deep.aaoffice@ct.gov](mailto:deep.aaoffice@ct.gov). Any person with a hearing impairment may call the State of Connecticut relay number - 711. Discrimination complaints may be filed with DEEP's Title VI Coordinator. Requests for accommodations must be made at least two weeks prior to any agency hearing, program or event.



## MARINE FISHING REPORT

---

*Surface water temperatures in Long Island Sound (LIS) remain in the high 60's to low 70's °F. Check out the web sites listed below for more detailed water temperatures and marine boating conditions and see page 5 for some recent water quality information.*

<http://www.mysound.uconn.edu/stationstat.html>

[http://marine.rutgers.edu/mrs/sat\\_data/?nothumbs=1](http://marine.rutgers.edu/mrs/sat_data/?nothumbs=1)

<http://www.ndbc.noaa.gov/>

<http://www.wunderground.com/MAR/AN/330.html>

Longer and cooler nights are triggering fish to put on the feedback before that fall migration really kicks in! Shore fishing is at its best now through October so don't forget about hitting our coastal state parks for some quality marine fishing! Go to <http://www.lisrc.uconn.edu/coastalaccess/> to find a fishing location near you!

**BLUEFISH** fishing is pretty awesome from 8 inch **SNAPPERS** to monster **CHOPPERS** chasing bunker schools. The tidal rivers are notorious for holding real large bluefish weighing in the teens and approaching 3 feet in length!

**STRIPED BASS** - To say the least, the bluefish are making it real tough for anglers targeting stripers. Fishing evening into night is your best chance to get into a linesider. Slings live eels or bouncing bucktail jigs has been effective. Fishing spots include the usual locations: the reefs off Watch Hill, Ram Island Reef, Thames River, Plum Gut, Pigeon Rip, Little Gull Island, outer Bartlett Reef, Black Point including Niantic Bay, the "humps" south of Hatchett Reef, lower Connecticut River, Long Sand Shoal, Cornfield Point, Southwest Reef including outer SW Reef, Six Mile Reef, the reefs off Madison, Guilford, and Branford, Falkner Island area, upper New Haven Harbor, Charles Island area, lower Housatonic River, buoys 18 and 20 off Stratford Point, Stratford Shoal/Middle Ground, Penfield Reef, the reefs around the Norwalk Islands, and Cable and Anchor Reef.

**SUMMER FLOUNDER** (fluke) fishing remains slow.

**SCUP** (porgy) fishing is good to excellent on the reefs!

**BLACK SEA BASS** fishing remains good but there are still a lot of throwbacks to deal with.

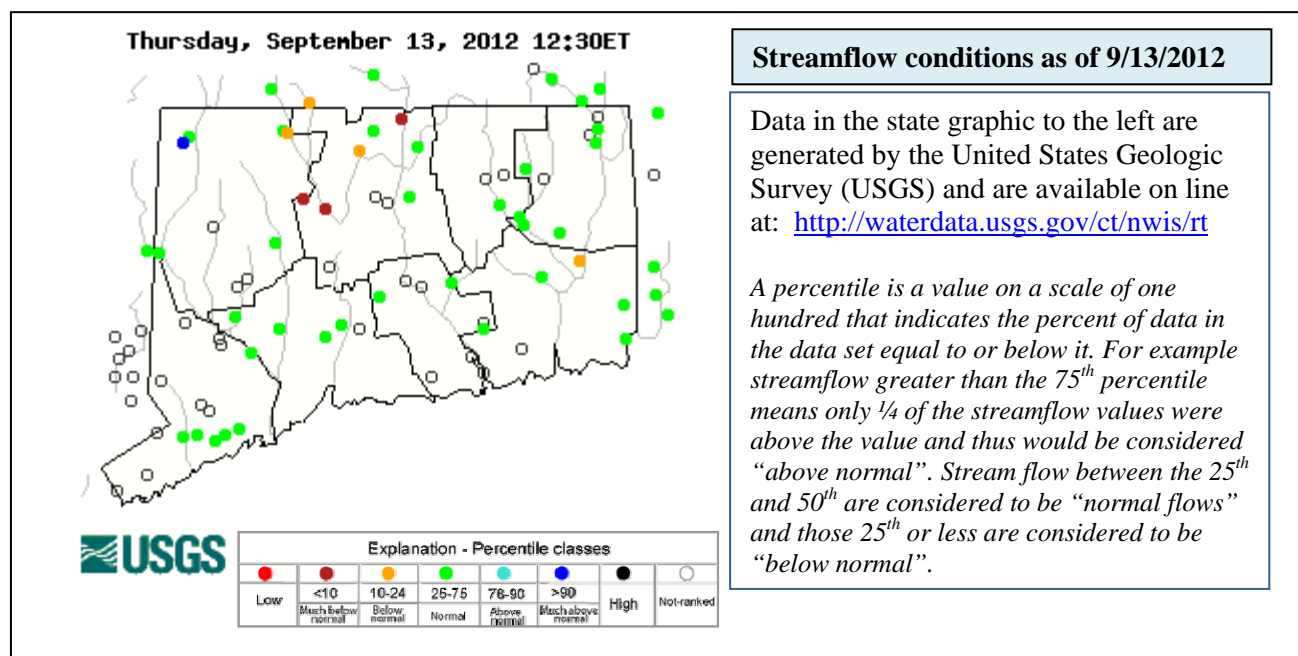
**LITTLE TUNNY** and **ATLANTIC BONITO** are buzzing around eastern LIS and the off major reefs mid sound.

**BLUE CLAW CRABBING** is at about peak but time may soon be running out.

---

**For Current Connecticut Recreational Fishing Regulations:** Anglers should consult the 2012 Connecticut Anglers Guide which is now available at most Town Clerks Offices, DEEP offices and at tackle stores selling fishing licenses. Current regulations, electronic versions of the Angler's Guide and additional information can all be accessed on the DEEP website at: [www.ct.gov/deep/fishing](http://www.ct.gov/deep/fishing).

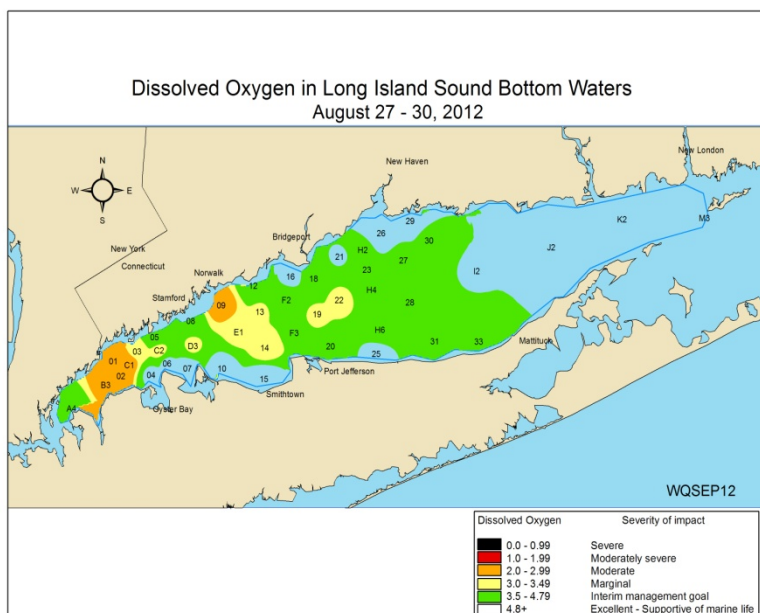




### CT DEEP LONG ISLAND SOUND WATER QUALITY MONITORING:

[http://www.ct.gov/dep/cwp/view.asp?a=2719&q=325570&depNav\\_GID=1654](http://www.ct.gov/dep/cwp/view.asp?a=2719&q=325570&depNav_GID=1654)

Monitoring of dissolved oxygen levels as well as other water quality parameters are the responsibility of the Long Island Sound Water Quality Monitoring Program within the Bureau of Water Protection and Land Reuse. The amount of oxygen in the water at the bottom of LIS is important for the survival and reproduction of a variety of organism which reside there. Examples include, flounder, fluke, lobster, crab, worms, clams, oysters, and other shellfish. Hypoxia is a condition of low dissolved oxygen concentrations in the waters of Long Island Sound that impacts up to half of the Sound's waters each summer. The primary cause of hypoxia is nitrogen enrichment that comes from a variety of sources throughout the Long Island Sound watershed, in particular sewage treatment plants, stormwater runoff and atmospheric deposition.



### DEEP WEEKLY Fishing Report



**Connecticut Department of  
ENERGY & ENVIRONMENTAL PROTECTION**

79 Elm Street, Hartford, CT 06106

[www.ct.gov/deep](http://www.ct.gov/deep)

Striped bass image courtesy Duane Raver/USFWS.